

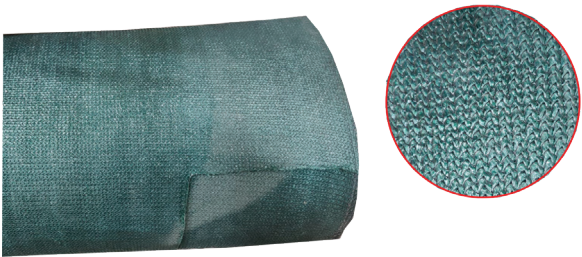
SHADE NET WATERPROOF GREEN

325GSM 2.85MX50M

PRODUCT DATA SHEET

Technical Specifications:

Material	HDPE + M+T+LDPE
Shade Rate	95%
UV Stabilization	Yes
Waterproof	Yes
GSM	325 GSM
Color	Green
Size	2.85m x 50m
Roll Weight	45.60 kg per roll
Length per Roll	50 meters



Description:

The Waterproof Shade Net (325 GSM) is a heavy-duty, UV-stabilized protective mesh designed to provide superior shading, rain protection, and durability. Manufactured using high-quality HDPE with M+T+LDPE lamination, it ensures long-lasting performance in harsh outdoor conditions. Ideal for agricultural, industrial, construction, and general shading applications requiring maximum coverage and waterproof performance.

Features:

- ★95% Shade Rate – Provides excellent sun protection while reducing heat.
- ★Waterproof Lamination – Effective barrier against rain and moisture.
- ★UV Stabilized – Enhances durability under long exposure to sunlight.
- ★High Strength HDPE Fabric – Tear-resistant and reliable for tough environments.
- ★All-Weather Protection – Suitable for sun, rain, wind, and dust control.
- ★Long Roll Length – Ideal for large-area installations.

Applications:

- ★Agriculture: Crop protection, greenhouse shading, livestock shelter.
- ★Construction: Scaffolding cover, temporary shade, site fencing.
- ★Parking Areas: Car parking shade net.
- ★Residential: Garden shading, privacy screens.
- ★Commercial: Outdoor shading for markets, warehouses, storage.