

Color Coded ID Clamps

Recommended for Driveshaft Applications

Benefits

- Poka-Yoke by visual inspection
- Wide variety of colors available
- High ink adhesion performance
- No change in mechanical or chemical performance



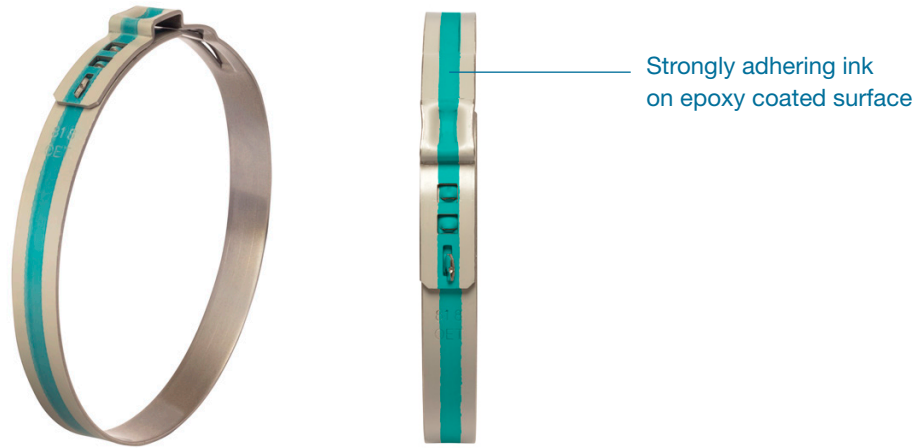
High color adhesion performance: ink is much more stable on plastic (epoxy coated) surface than metal surface

Wide variety of colors: 10 distinguishable colors available for visual inspection purpose

Ink over 360°: a perfectly colored ink throughout the whole circumference

Clamp characteristics: same mechanical and chemical performance as 167 10.0 × 1.0 mm

FEATURES



Color Coded ID Clamps

TECHNICAL DATA OVERVIEW

Material

Stainless steel, material no. 1.4301 (UNS S30400)
with Grey Epoxy Primer

Corrosion resistance according to DIN EN ISO 9227

> 1000 h

Series* PG 167

Size range	Width x thickness	Ear width
62.0 – 120.5 mm	10.0 x 1.0 mm	10.0 mm

*Further dimensions and product groups upon request

PRODUCT DESCRIPTION

Color Coded ID Clamps are made of pre-coated epoxy steel, which has a color stripe on the band surface for final visual inspection in the assembly line to differentiate driveshafts built in the car.

PRODUCT DESCRIPTION

Technology

Epoxy primer ensures ink adhesion that satisfies even the most demanding customer applications, providing a semi-permanent mark that is suitable for mass production.

Printing equipment is already available in almost all locations which produce clamps from band, and can be transferred seamlessly between different production lines to accommodate almost every product group.

Product scope

On request, further adjustments can be made with product groups, dimensions and non-standard color types. These are subjects to minimum order quantity and development fee.

Ink stripe

The ink stripe covers the clamp 360° centrally and is > 3 mm wide.



Standard color types

- 1 Red
- 2 Pink
- 3 Orange
- 4 Yellow
- 5 Green
- 6 Yellow Green
- 7 Blue
- 8 Light Blue
- 9 Black
- 10 White